

STUA

DENEB TABLE & BENCH TECHNICAL DETAILS



DESIGN

Their strong aluminium frame is very light and valid for indoor and outdoor use.

Frame finishes:

- anodized aluminium
- white lacquer
- black lacquer

DISEÑO

La estructura de aluminio, es muy ligera y resistente, y es válida tanto para interior como exterior.

Puede ser:

- aluminio anodizado
- lacada en blanco
- lacada en negro



VERSATILE

The frame options and the tabletop options combined make the Deneb table suit any environment.

VERSATILIDAD

Las numerosas combinaciones posibles entre estructuras y tapas hacen que la mesa Deneb encaje en cualquier ambiente.



TOPS

The wood veneer tops are for indoor and made with formaldehyde free MDF.

These are the Deneb tabletops that are valid for outdoor use:

- glass
- HPL
- teak

TAPAS

Las tapas de madera chapeada son para interior y están realizadas con MDF libre de formaldehidos.

Las tapas de las mesas Deneb que sirven para exterior son:

- vidrio
- HPL
- teka



TEAK

The solid teak wood comes from sustainable managed forests. Teak ages as time passes and takes on a pale grey colour. The teak must be oiled every year for good maintenance.

Sizes teak: 80 x 120, 90 x 160, 90 x 180 cm

TEKA

La madera de teka maciza proviene de bosques de gestión sostenible. La teka envejece con el tiempo y toma un color gris más apagado. Aplicar aceite anualmente para su mantenimiento.

Dimensiones teka: 80 x 120, 90 x 160, 90 x 180 cm



FIXING

Deneb tables and benches can be screwed to the floor, in which case it is necessary to order the corresponding anchor plates.

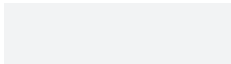
FIJACIONES

Los bancos y mesas Deneb pueden anclarse al suelo, en cuyo caso es necesario solicitar los anclajes al realizar el pedido.

FRAME ESTRUCTURA



Matt anodized aluminium
Aluminio anodizado mate



White shiny powder-coated aluminium
Blanco brillo, aluminio lacado en polvo

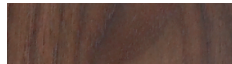


Black matt powder-coated aluminium
Negro mate, aluminio lacado en polvo

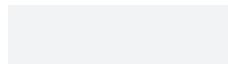
INDOOR TABLETOPS TAPAS DE INTERIOR



Oak Alpi or natural, 20 mm
Roble Alpi o natural, 20 mm



Walnut, 20 mm
Nogal, 20 mm



White lacquered, 20 mm
Lacado blanco, 20 mm

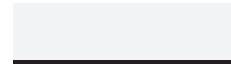


Black stained ash, 20 mm
Fresno teñido negro, 20 mm

OUTDOOR TABLETOPS TAPAS DE EXTERIOR



Teak solid-wood, 20 mm
Teka maciza, 20 mm

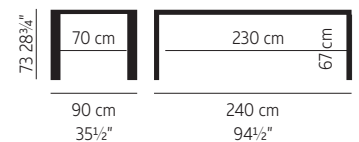
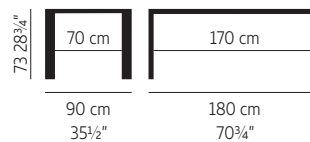
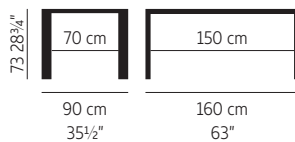
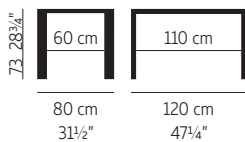


White HPL with black core, 12 mm
HPL blanco, canto negro, 12 mm

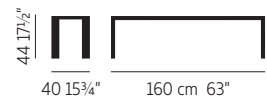
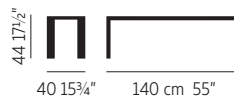


Clear glass, 10 mm
Vidrio transparente, 10 mm

TABLES / MESAS



BENCH AND STOOLS / TABURETE Y BANCOS



IN-STOCK Deneb: www.stua.com/in-stock

SUSTAINABLE DESIGNS

Within STUA's strategy, both, the quality of products and the preservation of the environment in our production processes, are a priority.

Over the years STUA has been implicated to the search for environmentally friendly raw materials, processes, products and packaging.

Among many others, we can highlight the following characteristics and actions:

- To design long lasting and good quality products.
- To reduce the consumption of raw materials.
- To use recycling materials.
- To use production systems which are environmentally friendly.

The achievement of these aims will contribute to a real sustainable development.

Our products hold the main European certificates and comply with demanding German standards as regards product resistance and ergonomics. At STUA we also care for people's health.

ENVIRONMENTALLY FRIENDLY PACKAGING

- In the pursuit of an environmentally friendly packing, STUA is removing all the plastic from this process.
- All STUA cardboard packaging is made with recycled materials and is 100% recyclable because no staples are used in the production.
- Our remaining packaging plastics contain no halogen.

LOGISTICS MINIMIZING CARBON FOOTPRINT

- STUA choose the eco-friendliest transportation method available.
- We select logistic partners who use environmentally-friendly technologies for their vehicles/engines and are located close to the factory where our products are manufactured in order to reduce the emission release.
- Load Optimization. We try to send a truck only when it is fully loaded.
- Route Optimization. By choosing the best route, it is possible to save fuel and, consequently, reduce the amount of CO₂ emissions.

RESPONSIBLE MANUFACTURING

- This product is totally manufactured in the European Union.
- The STUA designs are created for a long duration. This helps to make a friendly use of the natural resources. We offer a 2-year guarantee on all the STUA products. STUA guarantees a period of availability of spare parts of 10 years for any product.
- The wood used to manufacture our designs comes from sustainably managed forests registered with the PEFC (Programme for the Endorsement of Forest Certification).
- The MDF material and glues used in the production are formaldehyde free. STUA products use materials that comply with M1 and the California Air Resources Board ACTM 93120.2.
- STUA's fabrics comply with the strict ISO 14001 international environmental regulations regarding its products and its manufacturing processes.
- STUA's upholstery is fire-resistant but avoids the use of harmful retardants like PBB and PBDE.
- The foams used by STUA complies the most exhaustive ecological textile certificate: the OEKO-TEX STANDARD 100. The analyses include prohibited and regulated substances, chemicals considered dangerous to health, and preventive parameters.
- The treatment of metal parts for their subsequent painting, with powder paint or chromed, is the one corresponding to a degreasing and phosphating of the same. No aromatic solvents are used and no diffuse emissions of volatile organic compounds are generated.
- STUA's chrome plating process uses a trivalent chromium bath to replace the highly-toxic hexavalent chromium bath. The trivalent chromium process must produce hard chrome components that perform as well as or better than the older process. Other additional advantages involved in this process:
 - It is not necessary to reduce hexavalent chromium in wastewater.
 - It makes it easier to handle and use the product.
 - No gas emissions are produced.
- The recyclability of the metallic materials used by STUA reaches 97%.
- Our plastic elements are excluded from heavy metals and phthalats in their manufacture, as well as halogenated plastics such as PVC.
- STUA promotes processes with low water consumption. In the last 5 years, we have achieved a 31% saving in drinking water consumption by implementing saving processes.



USE OF WOOD FROM SUSTAINABLY MANAGED FORESTS



ECOLOGICAL UPHOLSTERY WITHOUT PBB & PBDE



FOAMS FIRE RETARDANT & FREE OF TOXIC SUBSTANCES



FORMALDEHYDE FREE PRODUCTS



HEXAVALENT CHROMIUM-FREE FINISHES



PROCESSES WITH LOW WATER CONSUMPTION



RECYCLABLE MATERIALS AND PACKAGING



CERTIFICATED FOR POSTURAL HEALTH