

*punt*



GIN

TECHNICAL INFORMATION SHEET



---

## PRODUCT TYPE

Sofá

The Gin modular sofa, designed by Terence Woodgate, represents the perfect synthesis of elegance, functionality and comfort. This seating system redefines the concept of versatility thanks to its modules with and without backrest, which allow to generate infinite configurations that transform residential, hospitality or contract spaces.

---

## TIPOLOGÍA DE PRODUCTO

Sofá

El sofá modular Gin, diseñado por Terence Woodgate, representa la síntesis perfecta entre elegancia, funcionalidad y confort. Este sistema de asientos redefine el concepto de versatilidad gracias a sus módulos con y sin respaldo, que permiten generar configuraciones infinitas que transforman entornos residenciales, hospitality o espacios contract.

## DETAILS DETALLES



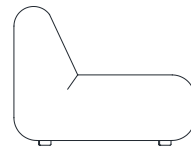
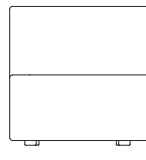
# GIN

BY TERENCE WOODGATE, 2016

**punt**

## DIMENSIONS DIMENSIONES

### GIN100



70 cm  
27.5 in

95 cm  
37.4 in

37 cm  
14.6 in

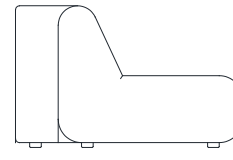
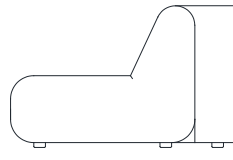
73 cm  
28.7 in

FABRIC (2.65 m x 1.4 m) (104.3" x 55.1")

### GIN401



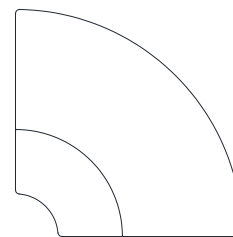
37 cm  
14.6 in



117 cm  
46 in

95 cm  
37.4 in

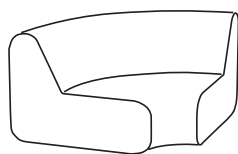
73 cm  
28.7 in



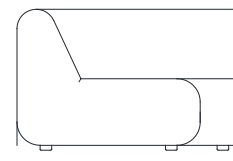
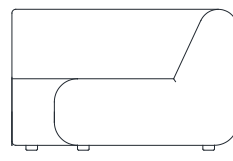
R 117 cm  
R 46 in

FABRIC (3 m x 1.4 m) (118.1" x 55.1")

### GIN402



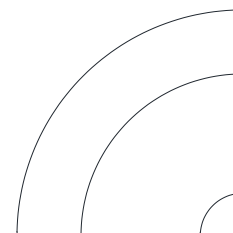
37 cm  
14.6 in



117 cm  
46 in

95 cm  
37.4 in

73 cm  
28.7 in



R 117 cm  
R 46 in

FABRIC (3 m x 1.4 m) (118.1" x 55.1")

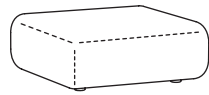
# GIN

BY TERENCE WOODGATE, 2016

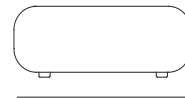
**punt**

## DIMENSIONS DIMENSIONES

### GIN201



95 cm  
37.4 in



36 cm  
14.1 in

95 cm  
37.4 in

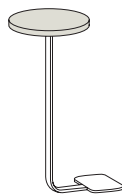
FABRIC (2.65 m x 1.4 m) (104.3" x 55.1")

## DIMENSIONS ACCESORIES DIMENSIONES ACCESORIOS

### ACGB01

Round side table in oak.

Mesita auxiliar redonda de roble.



21 cm  
8.2 in



47 cm  
18.5 in



21 cm  
8.2 in



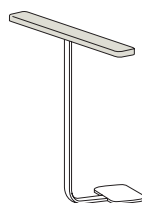
Compatible for positioning on both sides of the Gin modules.

Compatible para posicionar en ambos lados de los módulos Gin.

### ACGB02

Oak armrests.

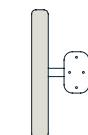
Reposa brazos de roble.



6 cm  
2.3 in



47 cm  
18.5 in



35 cm  
13.7 in



Compatible for positioning on both sides of the Gin modules.

Compatible para posicionar en ambos lados de los módulos Gin.

## ACCESORIES ACCESORIOS

### ACC094

USB Electrification.

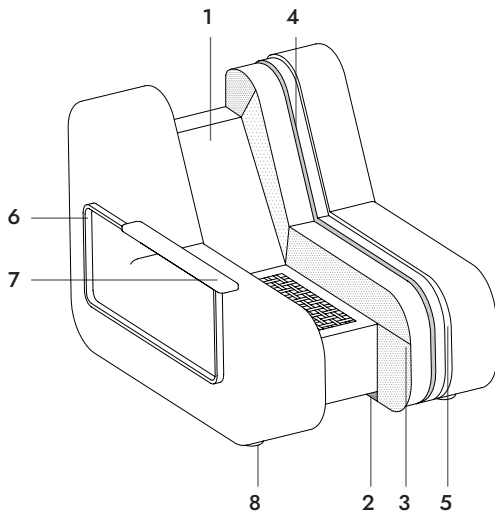
Electrificación USB.



It can only be installed on the side of the module.

Solo se podrá instalar en el lateral del módulo.

## COMPOSITION COMPOSICIÓN

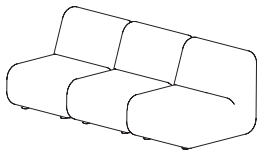


1. Pinewood frame with strap on the seat.
2. Flame-retardant black foaming.
3. Flameproof foams of flexible polyurethane in different densities.
4. 150-grams padding.
5. Fabric or leather.
6. Armrest in anodised aluminium or powder-coated steel.
7. Armrests' top of oak or walnut wood.
8. Plastic legs.

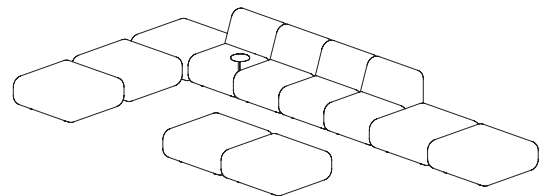
1. Armazón de madera de pino con correa en el asiento.
2. Espumado negro ignífugo.
3. Espumas ignífugas de poliuretano flexible en diferentes densidades.
4. Acolchado de 150 gramos.
5. Tejido o cuero.
6. Apoyabrazos de aluminio anodizado o acero con recubrimiento de polvo.
7. Parte superior de los reposabrazos de madera de roble o nogal.
8. Patas de plástico.

## EXAMPLES OF COMBINATIONS EJEMPLOS COMBINACIONES

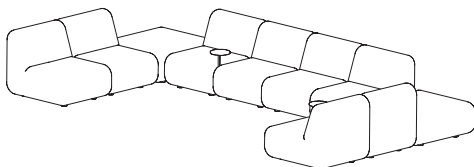
1.



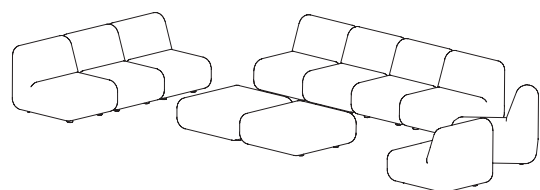
2.



3.



4.



## MATERIALS

Wood.

Upper armrests in oak or walnut.

Anodised aluminium or steel.

Anodised aluminium or powder coated steel armrests.

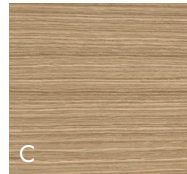
Upholstered.

Seat and backrest upholstered on 150 grams padding and flexible polyurethane fire retardant foams in different densities.

## Armrest & tables Reposabrazos y mesas



**SUPER MATT OAK**  
ROBLE SÚPER MATE  
CHÊNE SUPERMATE  
EICHE SUPERMATT  
ROVERE OPACO



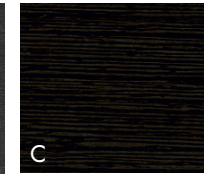
**WHITENED OAK**  
ROBLE BLANQUEADO  
CHÊNE BLANCHI  
EICHE WEISS  
ROVERE SBIANCATO



**WALNUT STAINED OAK**  
ROBLE TEÑIDO NOGAL  
CHÊNE TEINTÉ NOYER  
EICHE NUSSBAUM  
GEBEIZT  
ROVERE TINTO NOLE



**DARK GREY STAINED OAK**  
ROBLE TEÑIDO GRIS  
CHÊNE TEINTÉ GRIS  
EICHE DUNKELGRAU  
GEBEIZT  
ROVERE TINTO GRIGIO  
SCURO



**EBONY STAINED OAK**  
ROBLE TEÑIDO ÉBANO  
CHÊNE TEINTÉ ÉBÈNE  
EICHE EBENHOLZ  
GEBEIZT  
ROVERE TINTO ÈBANO

## MATERIALES

Madera.

Parte superior de los reposabrazos de madera de roble o nogal.

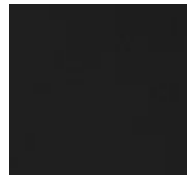
Aluminio anodizado o acero.

Apoyabrazos de aluminio anodizado o acero con recubrimiento de polvo.

Tapizado.

Asiento y respaldo tapizado sobre acolchado de 150 gramos y espumas ignífugas de poliuretano flexible en diferentes densidades.

## Armrest structure Estructura reposabrazos

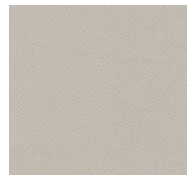


**BLACK**  
NEGRO  
NOIR  
SCHWARZ  
NERO

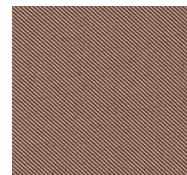
## Fabrics G2



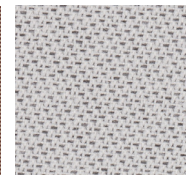
RELATE 101



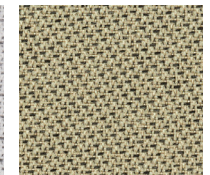
RELATE 201



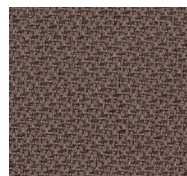
RELATE 341



TONAL 60122



TONAL 61179



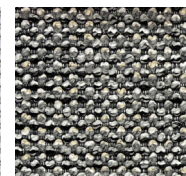
TONAL 64211



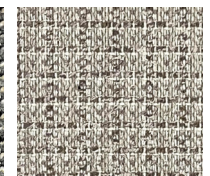
CASERTA 04



CASERTA 15



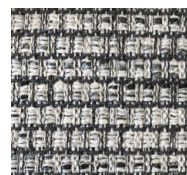
CASERTA 19



BACOLI 04



BACOLI 15



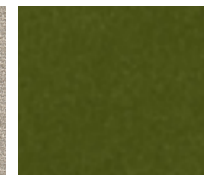
ODDI 09



MATIS 05



MATIS 07



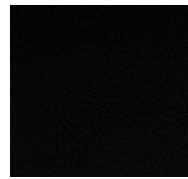
SEVEN 59



SEVEN 05



LEINEN 1049



SCHWARZ 9035

## Fabrics G3

---



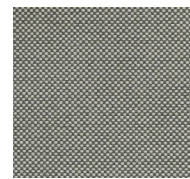
TEMP 61169



TEMP 61172



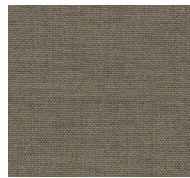
FIELD 232



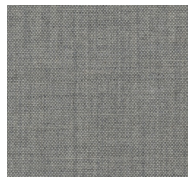
FIELD 242



REMI 223



REMI 233



REMI 123

## Fabrics G4

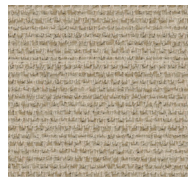
---



FOCUS 60309



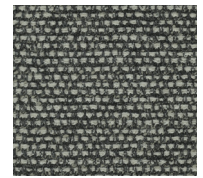
FOCUS 61242



SAVANNA 202



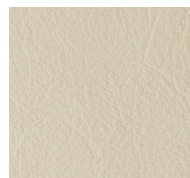
SAVANNA 122



SAVANNA 152

## Fabrics G5

---



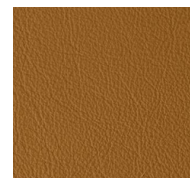
LAGUNA IVORY



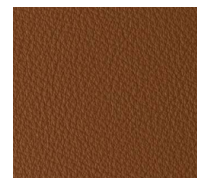
LAGUNA SAND



LAGUNA STONE



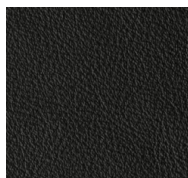
LAGUNA CAMEL



LAGUNA COGNAC



LAGUNA BROWN



LAGUNA BLACK