

BONALDO

Lake

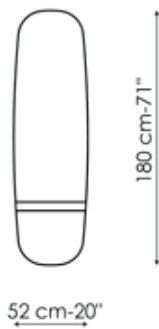
Designer: Gino Carollo



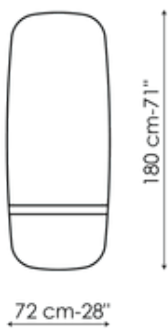
The concept behind the Lake family of wall mirrors is the result produced by the same finish on different materials, with different layers that visually create an object with a powerful decorative component. This mirror consists of three bands: the first one takes up the most space and consists of the mirror; laid over it is a central band of metal (painted bronze or painted lead), while the lower band is of glass, in the same finish as the metal. The Lake collection consists of three mirrors, each characterised by a different shape and size.



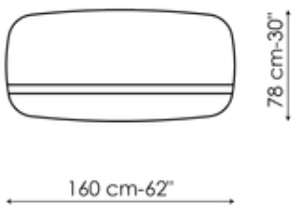
Data sheet



Lake 52
Width: 52cm
Depth: -cm
Height: 180cm



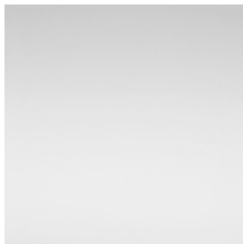
Lake 72
Width: 72cm
Depth: -cm
Height: 180cm



Lake 160
Width: 160cm
Depth: -cm
Height: 78cm

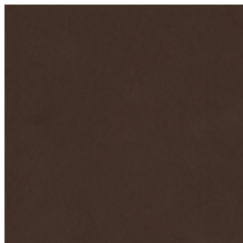
Finishes

Upper band

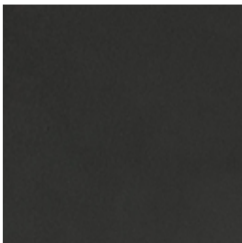


Mirror
Mirror

Central band



Painted metal
Mat bronze

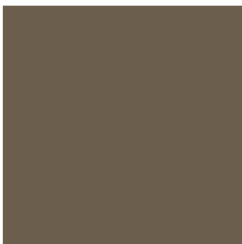


Painted metal
Mat lead

Lower band



Glass
Lead effect mirror



Glass
Bronze effect mirror

Materials, fabrics, leathers, colors and finishes are approximate and may slightly differ from actual ones. You can find the complete collection of Bonaldo fabrics and leathers on the website <https://bonaldo.biz>