

BONALDO

Cuff single bed

Designer: Mauro Lipparini



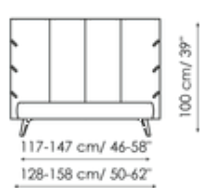
Available in double or single versions, Cuff is a bed made elegant by the exquisite details that characterize it: from the frog fastenings that adorn the two flaps which cover the padded headboard, to the pleating that runs vertically and the leather inserts that also enrich the modern single bed. Available with completely removable cover in fabric, leather or eco-leather, the Cuff modern single bed is produced in various versions:

with feet in painted metal (Cuff), higher headboard (Cuff hi), thicker bed frame, low feet in painted wood and low (Cuff plus) or high (Cuff hi plus) headboard.

In the versions with storage (Cuff open and Cuff hi open), valuable additional space is provided for storing covers, cushions and everything necessary for the bedroom.

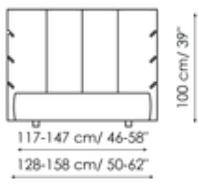


Data sheet



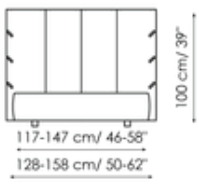
Cuff

Width: 128-158cm
Depth: 220cm
Height: 100cm



Cuff plus

Width: 128-158cm
Depth: 220cm
Height: 100cm

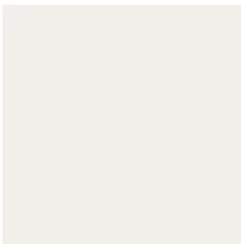


Cuff open

Width: 128-158cm
Depth: 220cm
Height: 100cm

Finishes

Feet



Painted metal
Mat white



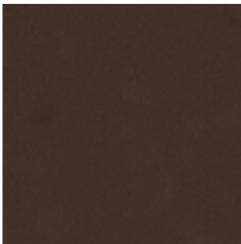
Painted metal
Mat dove grey



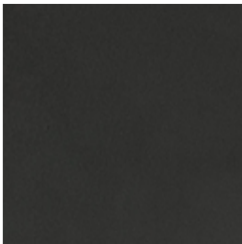
Painted metal
Supreme anthracite



Painted metal
Mat black



Painted metal
Mat bronze



Painted metal
Mat lead



Painted metal
Mat pearl gold



Painted wood
Anthracite grey

Materials, fabrics, leathers, colors and finishes are approximate and may slightly differ from actual ones. You can find the complete collection of Bonaldo fabrics and leathers on the website <https://bonaldo.biz>