

# BONALDO

## Sleek

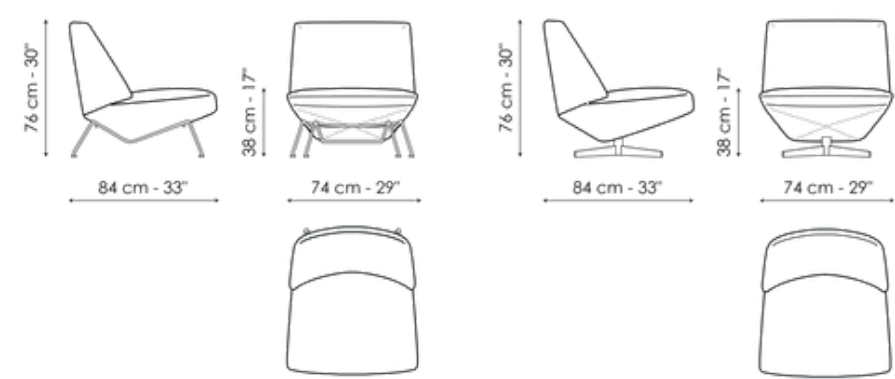
Designer: Mauro Lipparini



The Sleek armchair, which smoothly relates to the surrounding space, represents a new idea of comfort and visual appeal, able to dynamically interpret the needs of those who sit on it. The shape of this elegant armchair designed by Mauro Lipparini, featuring discreet cuts and harmonious geometries, recalls the nostalgic spirit of Italian mid-century modernism. The combined seat-backrest sits on a metal structure with an aesthetically light design. The Sleek armchair is available in two versions: with swivel base or with four feet.



# Data sheet



**Sleek - feet**

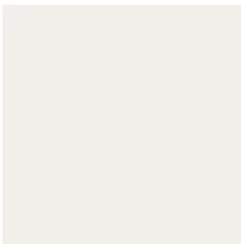
Width: 74cm  
Depth: 84cm  
Height: 76cm

**Sleek - swivel base**

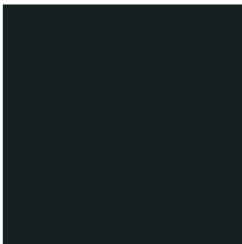
Width: 74cm  
Depth: 84cm  
Height: 76cm

# Finishes

## Feet / Swivel base



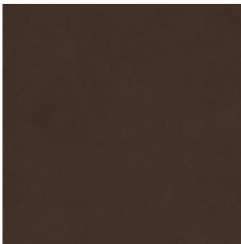
**Painted metal**  
Mat white



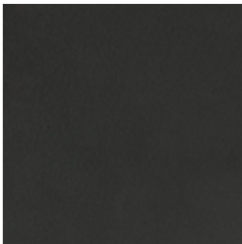
**Painted metal**  
Mat black



**Painted metal**  
Mat dove grey



**Painted metal**  
Mat bronze



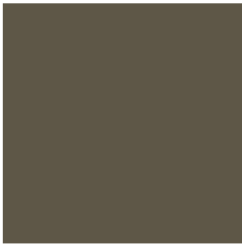
**Painted metal**  
Mat lead



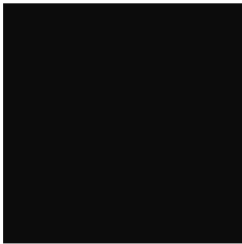
**Painted metal**  
Mat pearl gold



**Metal finish**  
Clouded chrome



**Metal finish**  
Brown nickel



**Metal finish**  
Dark nickel

---

Materials, fabrics, leathers, colors and finishes are approximate and may slightly differ from actual ones. You can find the complete collection of Bonaldo fabrics and leathers on the website <https://bonaldo.biz>