

# ***BONALDO***

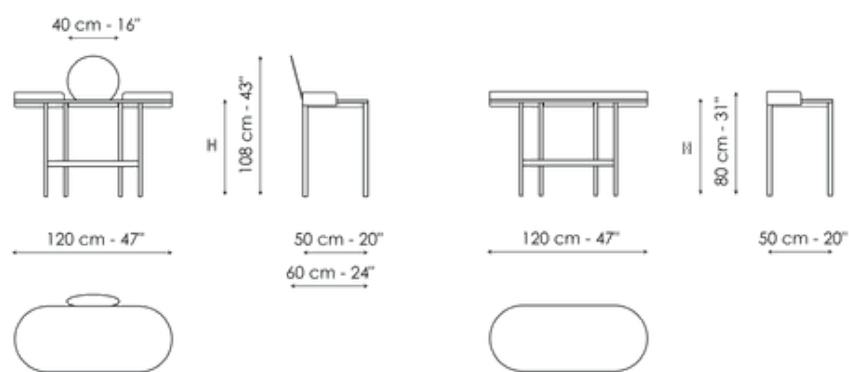
## Asia



The Asia model is a multifunctional piece of furniture. It can turn from a desk into a vanity table with the addition of a mirror. The top features only rounded lines, and it is available in either marble or ceramic, while the structure base is made of metal. The idea behind the modern writing desk is a blend of form and function, a stylistic sophistication expressed through a daily commitment to harmony.



# Data sheet



## Asia - vanity

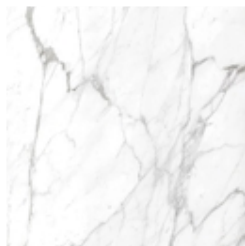
Width: 120cm  
Depth: 60cm  
Height: 108cm

## Asia - home office

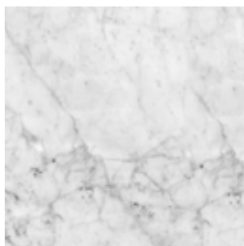
Width: 120cm  
Depth: 50cm  
Height: 80cm

# Finishes

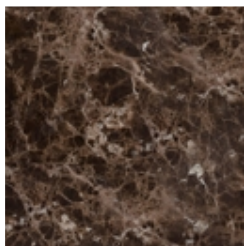
## Top



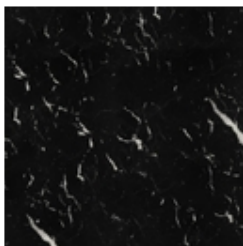
**Marble**  
Calacatta



**Marble**  
Carrara



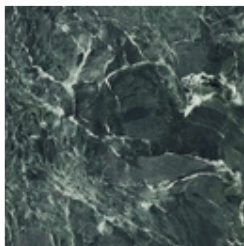
**Marble**  
Emperador



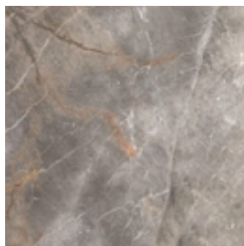
**Marble**  
Marquinia



**Marble**  
Rosso Carpazi



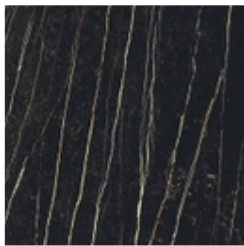
**Marble**  
Saint Denis



**Marble**  
Fior di bosco



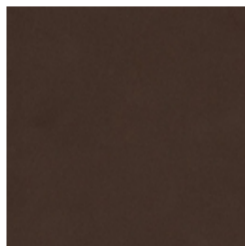
**Silk finish ceramic**  
Calacatta macchia vecchia



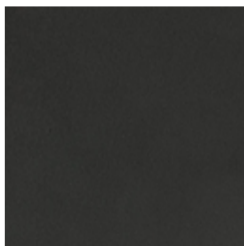
**Mat ceramic**  
Laurent

---

## Structure



**Painted metal**  
Mat bronze



**Painted metal**  
Mat lead



**Painted metal**  
Mat pearl gold

---

Materials, fabrics, leathers, colors and finishes are approximate and may slightly differ from actual ones. You can find the complete collection of Bonaldo fabrics and leathers on the website <https://bonaldo.biz>