

BONALDO

Colibrì chair

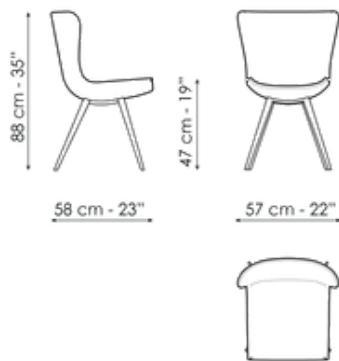
Designer: Fabrice Berrux



Perfect for the dining area, the Colibrì chair, available as a fabric dining room chair or in leather, renews the balance between the parts that distinguish it. The thin metal structure of the base highlights the welcoming volume of the seat/backrest: a large “shell” with raised edges and generous proportions that offers “comfort without gravity”, giving body to the essential image from which the design by Fabrice Berrux emerges. The working of the padded surface highlights the detail of the parallel-stitched seams which run along the entire length of the upholstery.



Data sheet



Colibri chair

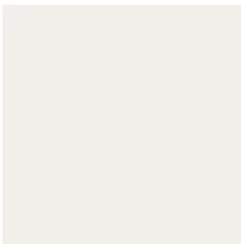
Width: 58cm

Depth: 57cm

Height: 88cm

Finishes

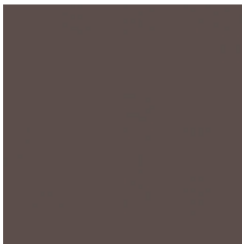
Legs



Painted metal
Mat white



Painted metal
Mat dove grey



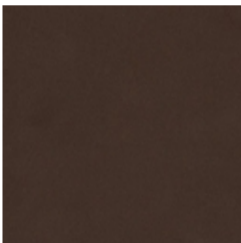
Painted metal
Mat brown



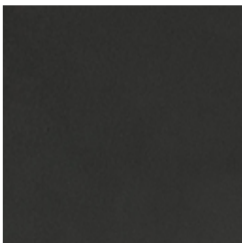
Painted metal
Mat black



Painted metal
Supreme anthracite



Painted metal
Mat bronze



Painted metal
Mat lead



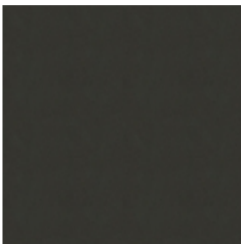
Painted metal
Mat pearl gold



Painted metal
Mat brass



Painted metal
Mat copper



Metal finish
Burnished

Materials, fabrics, leathers, colors and finishes are approximate and may slightly differ from actual ones. You can find the complete collection of Bonaldo fabrics and leathers on the website <https://bonaldo.biz>