

BONALDO

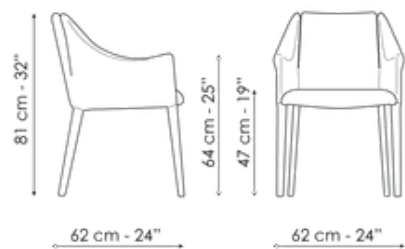
Vela



The four-legged Vela, a modern upholstered dining chair, harks back to the classic early 20th century armchair which decorated elegant bourgeois European salons. On closer inspection, all the modern elements of the design developed by Bonaldo Lab emerge, from the sense of lightness which reminds the observer of a yacht at sea to the technological innovations, perceptible through the intensity of the surfaces, taut and ready to be transformed into welcoming forms.



Data sheet



Vela

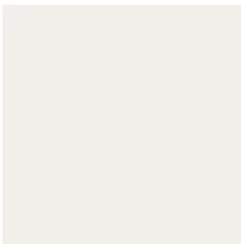
Width: 62cm

Depth: 62cm

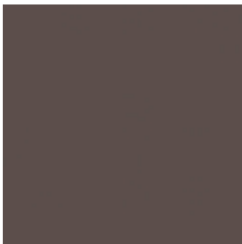
Height: 81cm

Finishes

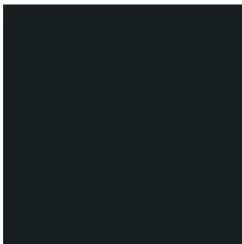
Legs



Painted metal
Mat white



Painted metal
Mat brown



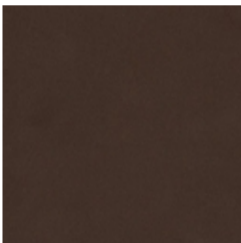
Painted metal
Mat black



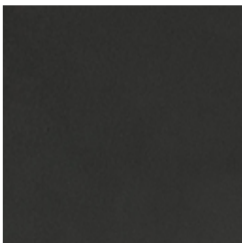
Painted metal
Mat dove grey



Painted metal
Supreme anthracite



Painted metal
Mat bronze



Painted metal
Mat lead



Painted metal
Mat pearl gold



Painted metal
Mat brass



Painted metal
Mat copper

Materials, fabrics, leathers, colors and finishes are approximate and may slightly differ from actual ones. You can find the complete collection of Bonaldo fabrics and leathers on the website <https://bonaldo.biz>