

# **BONALDO**

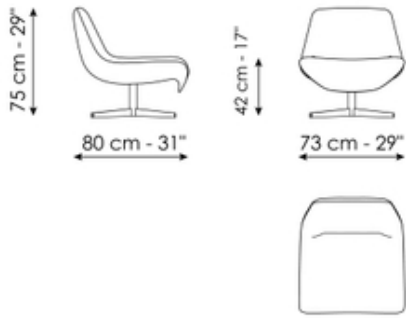
## Ellison

Designer: Massimo Castagna



The Ellison armchair is defined by a single continuous line that shapes both the seat and the backrest. At the junction between these two elements, the upholstery adapts to the change in form, revealing a subtle lateral tension, a detail that lightens the volume and introduces a sense of immediate familiarity. It is an apparently irregular gesture that evokes the memory of traditional upholstery, making the form feel more approachable and lived-in, while preserving the clarity and contemporary character of the design. The four-spoke swivel metal base further enhances the armchair's sense of lightness, creating a balanced relationship between the structure and the upholstered volume.

# Fiche de données



## Ellison

Longueur: 73cm

Profondeur: 80cm

Hauteur: 75cm

# Finishes

## Base pivotante



**Métal verni**  
Gris tourterelle opaque

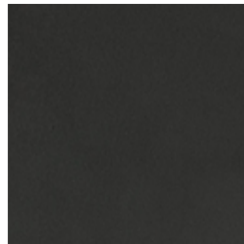
**Métal verni**  
Noir opaque

**Métal verni**  
Supreme anthracite

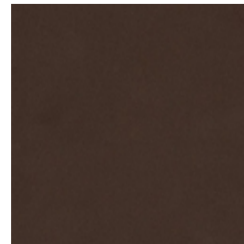
**Métal verni**  
Blanc opaque



**Métal verni**  
Or perlé opaque



**Métal verni**  
Plomb opaque



**Métal verni**  
Bronze opaque

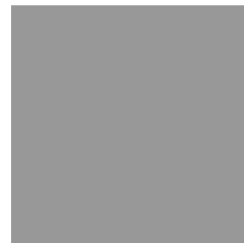
**Métal verni**  
Laiton opaque



**Métal Spécial**  
Dark nickel



**Dark nickel**  
Brown nickel



**Métal Spécial**  
Clouded chrome



**Métal Spécial**  
Champagne nickel



**Métal Spécial**  
Bright nickel