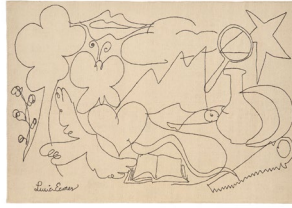



Lucia Eames™

Lucia Eames



Discovery

Extras and customization

 Custom sizes available

 Antislip included

Cleaning instructions

 Professional dry cleaning

Technical information

Fiber 90% Hand spun Afghan wool + 10% New Zealand wool

Technique Hand loomed + Embroidery

Type Kilim

Total height 4 mm

Density 48.000 yarns/m²

Weight 2 kg/m²

Sizes (cm) 170×240 200×300 250×350 300×400

Sizes (ft in) 5'7"×7'10" 6'7"×9'10" 8'2"×11'6" 9'10"×13'1"

Certifications



✓ ASTM E648 ✓ CAL PROP 65 ✓ CFR 16 PART 1630/1631 ✓ ADA compliant



Due to the irregularity of the hand spun afghan wool yarn, during the dyeing process the yarn can get different color shades.